



Week 5 Checklist and Practice Sheets

1. Do this first:

- Click the **printer icon** on the PDF toolbar above to print this document.

2. Do these in Music Ace:

- Lesson 15 and Games:** Above the Treble Staff
(After each Lesson, try out the **Music Ace games** until you are familiar with the concepts)
- Lesson 16 and Games:** The Measure
- Lesson 17 and Games:** The ABC's of the Bass Staff

3. Practice sheets:





- Complete the **Practice Sheets** on the next pages

4. Do these in your online Music Theory course:

- Week 5 Lesson**
- Quiz 5**

Week 5 Objectives

After completing this lesson you will be able to:

-  name the notes above the **treble staff**
-  use **measures** to separate groups of beats
-  understand **time signatures**
-  name the notes on the **bass staff**

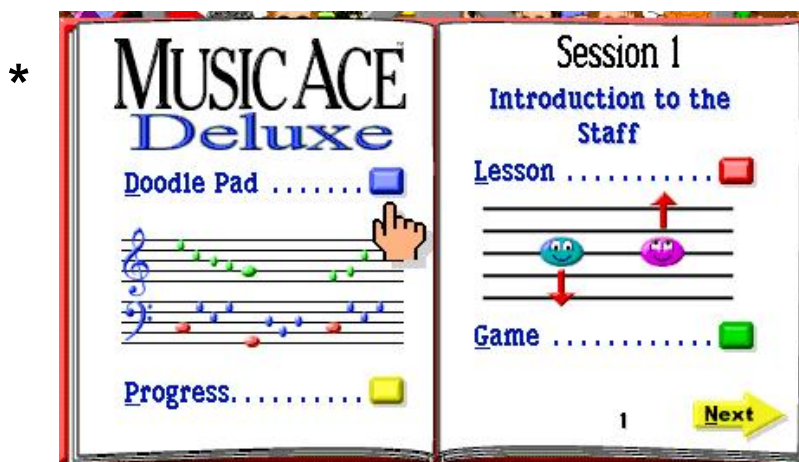


Practice Sheet


Practice with time signatures and measures using Doodle Pad


Launch your **Music Ace** program.

From the Main Menu, click the **Doodle Pad** button.

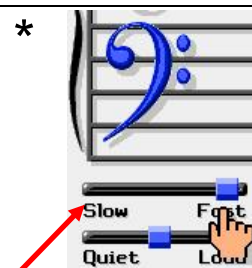


Click  and listen to the melody.

Stop the song any time by clicking .

Click  to restart the song at the beginning.

If you need to slow the music down, you can move the tempo slider to **Slow** by dragging the blue slider bar to the left.



Practice Sheet

To practice with **time signatures** and **measures**, you will need to open song files in the **Doodle Pad Jukebox**. From **Doodle Pad**, click the **Jukebox** button, then double-click the **showcase** folder. Drag the scrollbar across to the right until you see the file name. Select the file with your mouse and click the **Open** button.

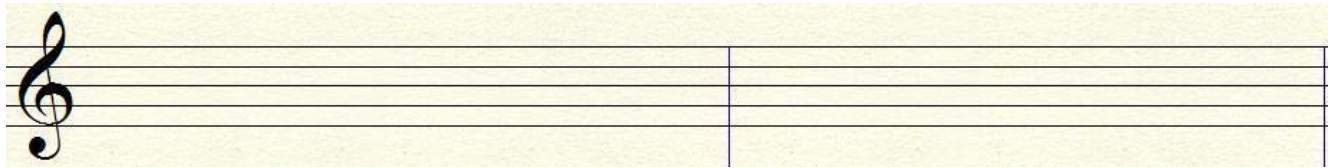
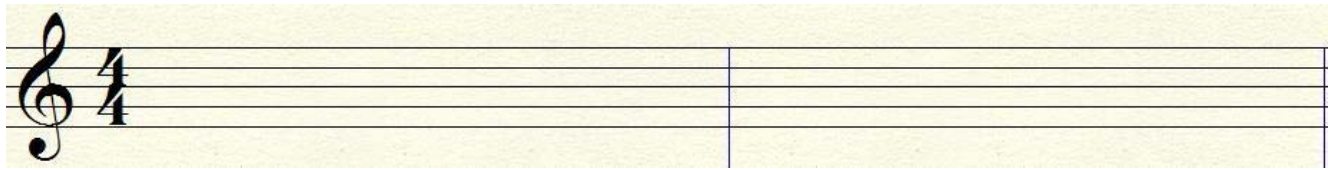
If you want step by step instructions, use your **Week 3 Checklist** to see how to open a song file in the **Jukebox**.

Write your answers on this Practice Sheet! You will need them for the Quiz.

Practice 1: Open the **Melody.jbx** file in your Jukebox. The **time signature** of this song is

4. This is also written as $\frac{4}{4}$

Play the song. Slow the tempo down, or replay the song as often as you want. Write the **aqua notes** in the measures below. You will need only quarter notes and eighth notes, and you will write **4 measures**. The very last beat will be a **quarter rest**.

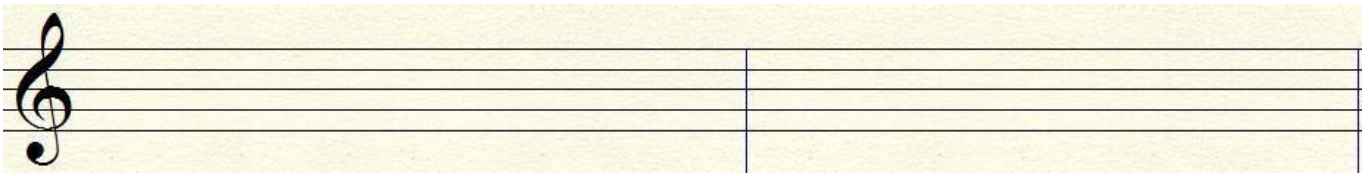
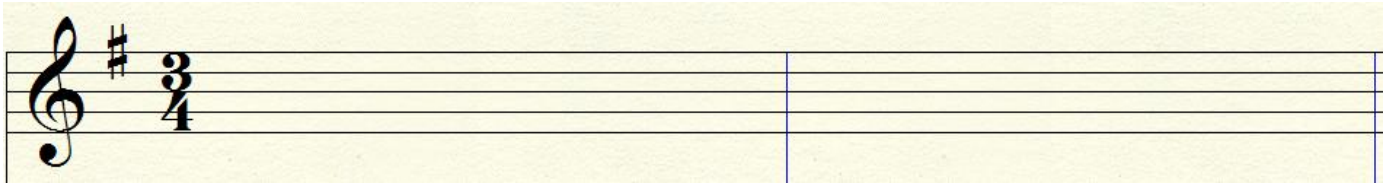


Practice Sheet

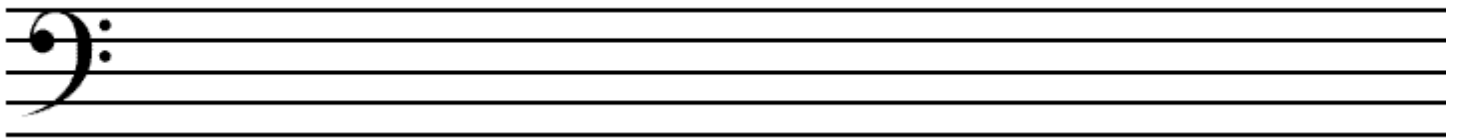
Practice 2: Open **Minuet.jbx** and **play** the song. The **time signature** of this song is **3**.
This is also written as **3**
4



Write the **treble staff notes** in the measures below. You will need only quarter notes and eighth notes, and you will write **4 measures**.



Draw the bass clef **space notes** on this staff. Use quarter notes, remembering that the stems go **down** for notes on the middle line and above. Write the letter name below each note.



Draw a bass clef and the bass clef **line notes** on this staff. Use quarter notes and write the letter name below each note.

